

act yearly time table path request

Name: yearly time table path request
 Author: Stefan Schaefer
 Version: 1.2
 Created: 29.01.2009 00:00:00
 Updated: 22.02.2011 13:44:59

Legend

- Messages
- System as actor
- Person as actor
- Questions, open issues
- dotted task: a subactivity, a structured set of task
- Process step forwarding a message (and keeping a copy)
- comment for using the process/step
- changed steps for YTT

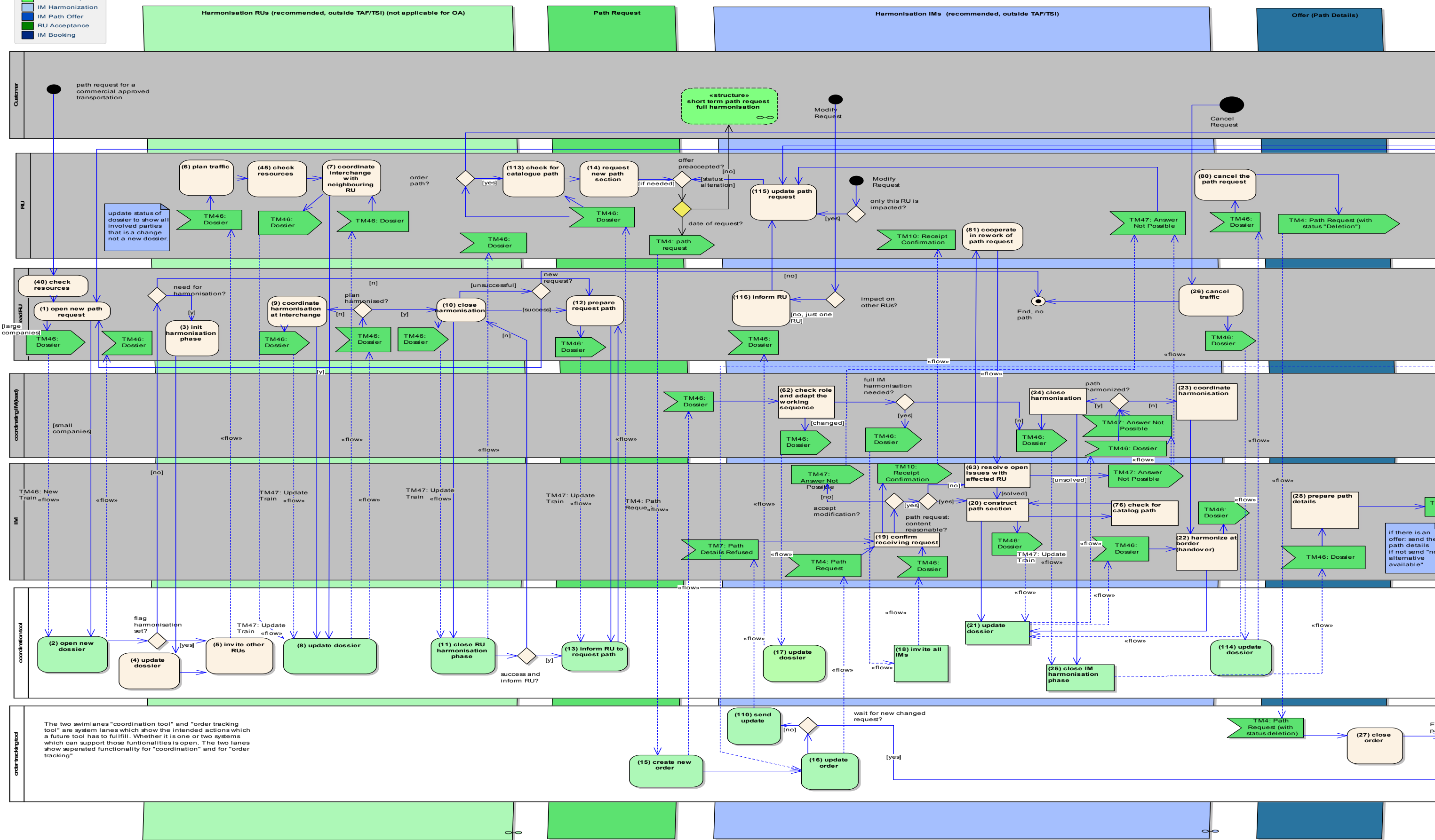
— process flow
 - - - - - dotted: information flow, exchanged in messages

101216 v10 London: Initial
 110203 v11 Karlsruhe: changes from core group
 110222 v12 Frankfurt: added TM10 receipt confirmation

Legend

- RU Harmonization
- RU Path Request
- IM Harmonization
- IM Path Offer
- RU Acceptance
- IM Booking

send message
 receive message



The two swimlanes "coordination tool" and "order tracking tool" are system lanes which show the intended actions which a future tool has to fulfill. Whether it is one or two systems which can support those functionalities is open. The two lanes show separated functionality for "coordination" and for "order tracking".

